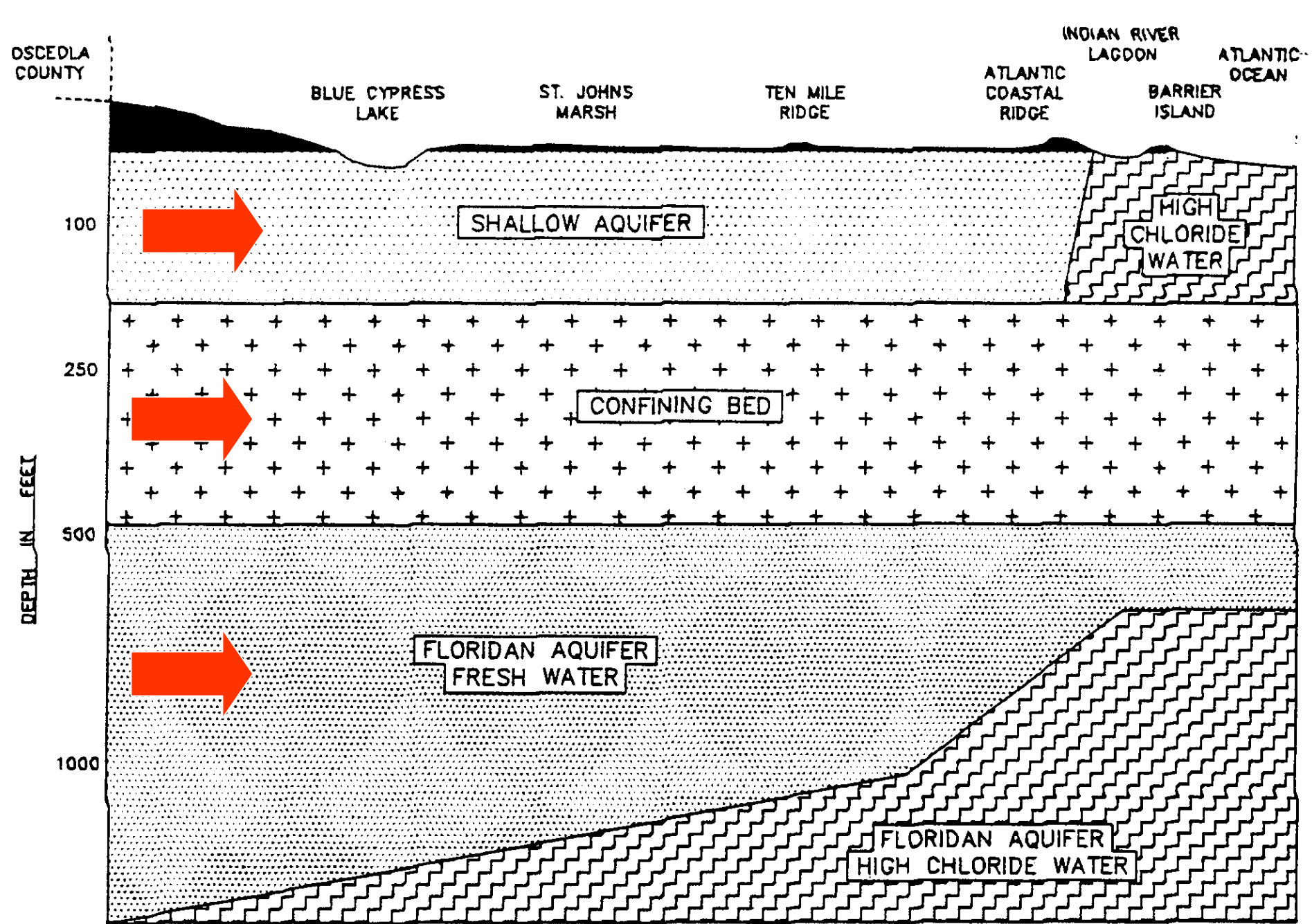


**Evaluation and Appraisal Report**  
**for the Indian River County Comprehensive Plan**

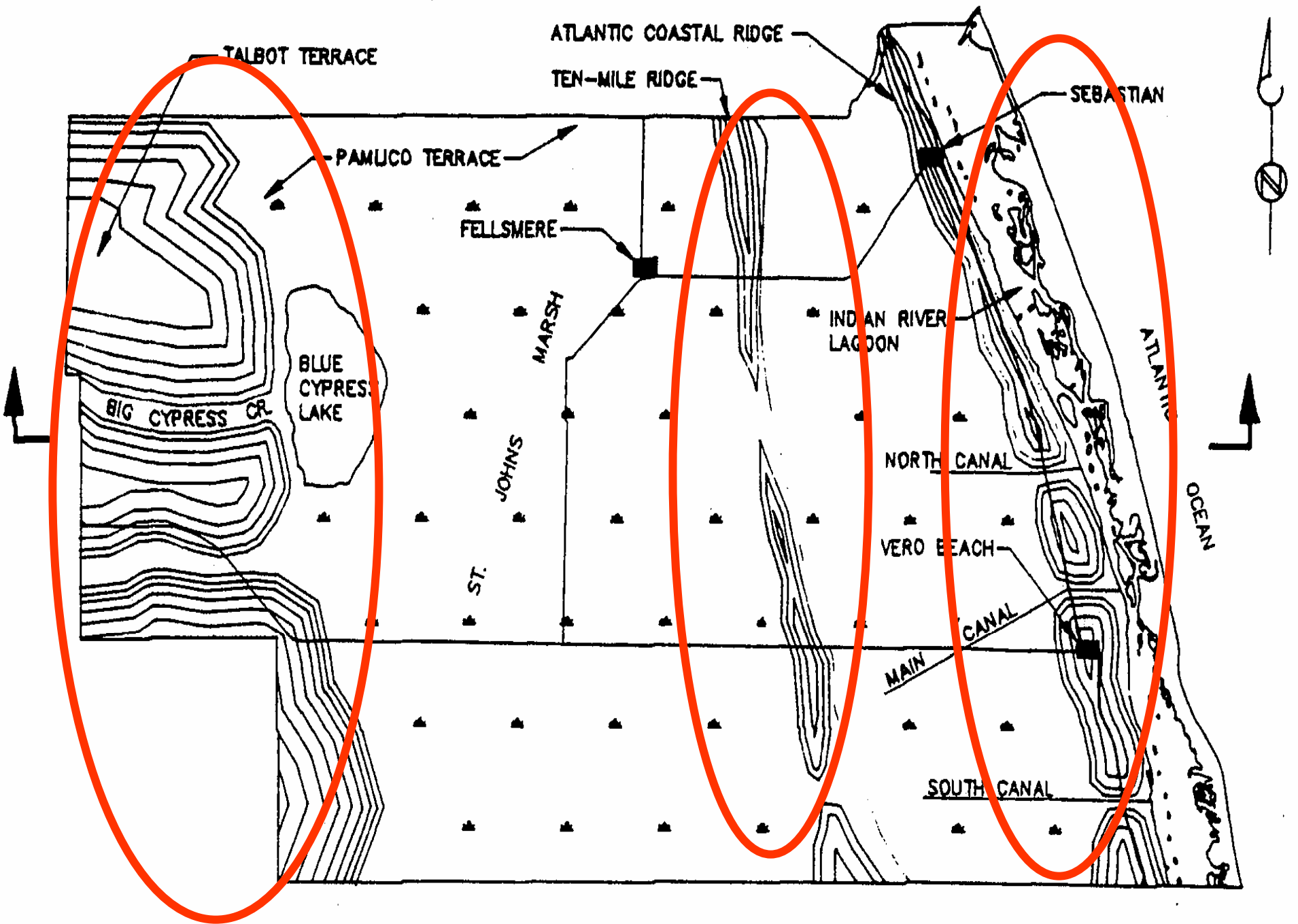
**Natural Groundwater Aquifer  
Recharge Sub-Element**

**Indian River County Planning and Zoning  
Commission EAR Workshop**

**September 30, 2008**



NOTE: "HIGH CHLORIDE WATER" HAS A CONCENTRATION IN EXCESS OF 250mg/l CHLORIDE



# Primary Recharge Areas Protection

- **611 of scrub conservation** on **Atlantic Coastal Sand Ridge** (primary recharge - surficial aquifer)
- **1,256 acre Sand Lake Tract** conserved on **Ten Mile Ridge** (primary recharge – surficial aquifer)
- Low development densities maintained **west of Blue Cypress Lake: 1 unit /20 acres** (Floridan aquifer recharge)

# Aquifer Recharge Sub-Element

- **1996-2007:** per capita water consumption increased from 70 MGPD to 143 MGPD (104%)
- **1996-2007:** agricultural water use dropped by 11 MGPD (-18%)
- **1995-Present:** SJRWMD region groundwater consumption increased by 422 MGPD (20%)
- **By 2025:** SJRWMD region groundwater use expected to increase by an additional 100 MGPD

# Aquifer Recharge Sub-Element Objectives and Policies

## **Objectives Achievement:**

- 4 objectives achieved
- 1 not achieved

## **Policies implementation:**

- 25 policies implemented
- 3 not implemented

# Aquifer Recharge Objectives

Objective #	Description	Achieved	Not Achieved	Future Action
1	Water Quality Protection	✓		Maintain
2	Surficial Aquifer Water Quantity	✓		Revise time horizon and measurement approach
3	Floridan Aquifer Water Quantity	✓		Revise time horizon and measurement approach
4	Intergovernmental Coordination		✓	Revise target date
5	Capital Improvements	✓		Revise target date to protect additional acreage

# Objective 2: Surficial Aquifer Quantity

- **“Through 2020, there will be no reduction in the availability of groundwater from the surficial aquifer...”**
- **Measure: Potential yield of groundwater** in the surficial aquifer.
- **Achieved: Surficial aquifer groundwater use demand currently being met.** (SJRWMD is preparing a regional groundwater model; concerns of future drawdowns in Fellsmere and Vero Beach areas.)

# New/Revised Policies – Surficial Aquifer Quantity

OBJECTIVE	POLICY	REVISION
2	2.2 (Revise)	Adopt a water conservation ordinance (new target date)
2	2.4 (Revise)	Reflect revisions to mining regulations based on moratorium workshops, “consensus recommendations” (groundwater-related)
2	New	Obtain an updated countywide geohydrology study with seismic profiles or comparable data

# Objective 3: Floridan Aquifer Quantity

- “There will be **no reduction in the availability** of groundwater from the **Floridan aquifer through 2020...**”
- Measure: **Availability of groundwater** in the **Floridan aquifer**.
- Achieved: SJRWMD projects **no significant reduction** in **Floridan aquifer groundwater availability** in Indian River County **through at least 2025**. (Note: regional groundwater model being prepared by SJRWMD)

# New Policy – Floridan Aquifer Quantity

OBJECTIVE	POLICY	REVISION
3	New	<b>Cross-reference policies of new Objective 8 of Potable Water Sub-Element: Alternative Water Supply</b>

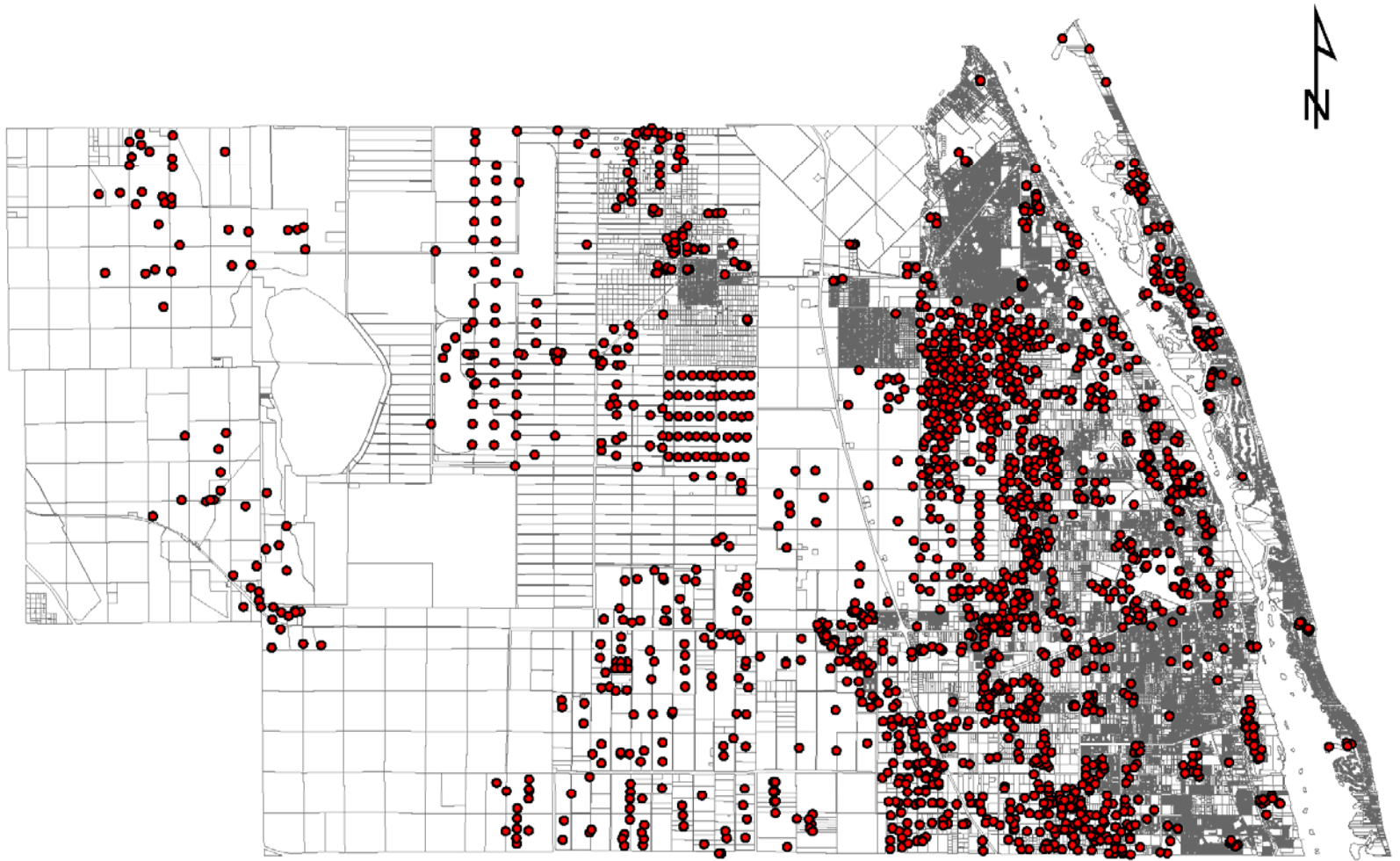
# Questions or Comments

- Roland DeBlois 226-1258

[rdeblois@ircgov.com](mailto:rdeblois@ircgov.com)

- Andy Sobczak 226-1518

[asobczak@ircgov.com](mailto:asobczak@ircgov.com)



Consumptive Use Permits and Pumps - 2004  
(General Location Map - 1,984 CUPs)