

# OFFICIAL ZONING ATLAS

INDIAN RIVER COUNTY, FLORIDA

## Section 26 FLEMING GRANT

Map Number: 01.18

Map Date: Dec 11, 2009



Community Development Department  
1801 27th Street  
Vero Beach, FL 32960  
Phone: 772-226-1237

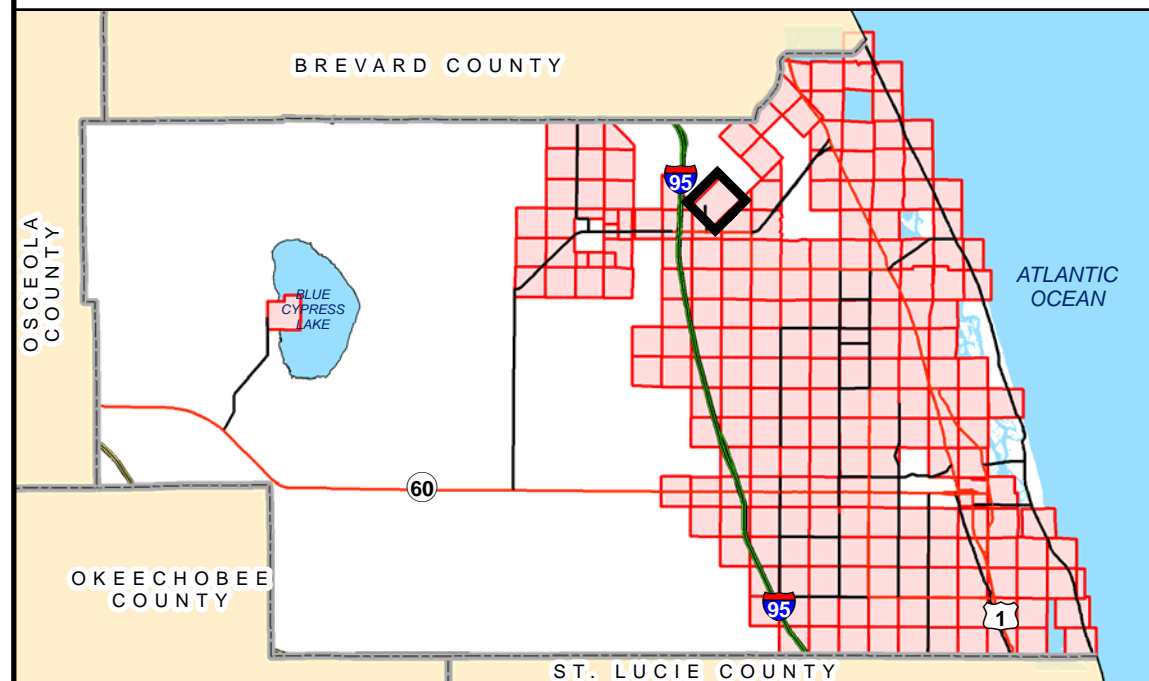
### MAP LEGEND

- PLSS Section Corners
- City Limits
- TieBar Lines
- Special Corridors
- County Line
- Meander Lines
- Section Lines
- Tracts & Aliquot Parts
- Parcel Boundaries

### ZONING

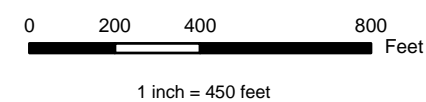
- |       |        |        |
|-------|--------|--------|
| A-1   | CRVP   | RM-4   |
| A-2   | IG     | RM-6   |
| A-3   | IL     | RM-8   |
| AIR-1 | MED    | RMH-6  |
| CG    | OCR    | RMH-8  |
| CH    | PD     | RS-1   |
| CL    | PDTND  | RS-2   |
| CN    | PRO    | RS-3   |
| CON-1 | R-BCID | RS-6   |
| CON-2 | RM-10  | RT-6   |
| CON-3 | RM-3   | Rose-4 |

### LOCATOR MAP



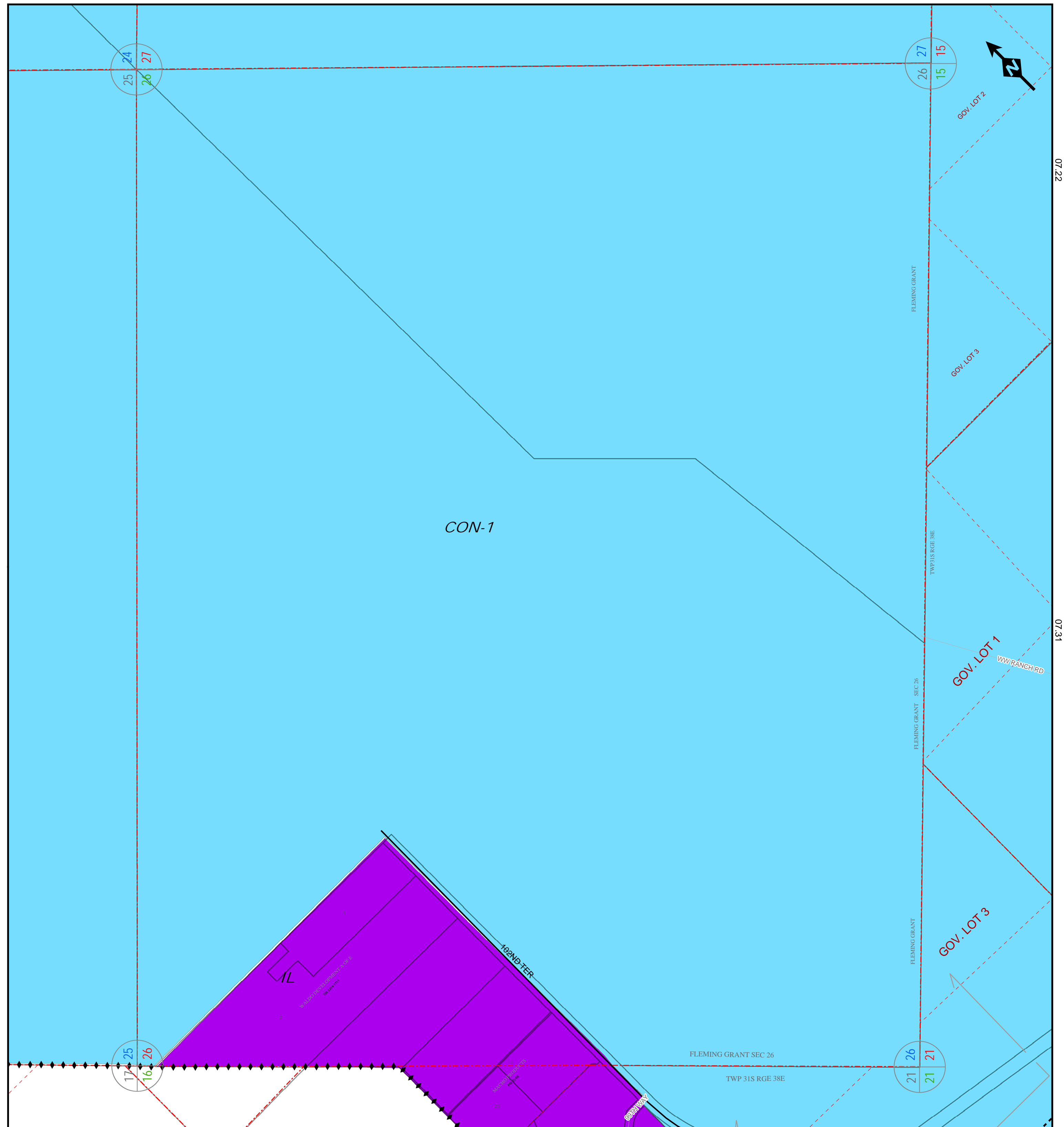
NOTE: Undeveloped riverfront wetlands are zoned Con-2, subject to survey verification. Contact county environmental planning staff for more information.

NOTE: Zoning designations adjacent to the St. Sebastian River may include Con-2 and Con-3, contingent upon site-specific environmental surveys. Such surveys require county staff approval and will set the precise boundary of Con-2 and Con-3.



### INFORMATIONAL PLAT - NOT A SURVEY

THE INFORMATION CONTAINED HEREIN IS TAKEN FROM RELIABLE SOURCES HOWEVER, ITS ACCURACY IS NOT GUARANTEED STATE PLANE COORDINATES, NAD83/90



07.23

07.28

07.22

07.31