

OFFICIAL ZONING ATLAS

INDIAN RIVER COUNTY, FLORIDA

Section 29 30S-39E

Map Number: 02.13

Map Date: Dec 11, 2009



Community Development Department
1801 27th Street
Vero Beach, FL 32960
Phone: 772-226-1237

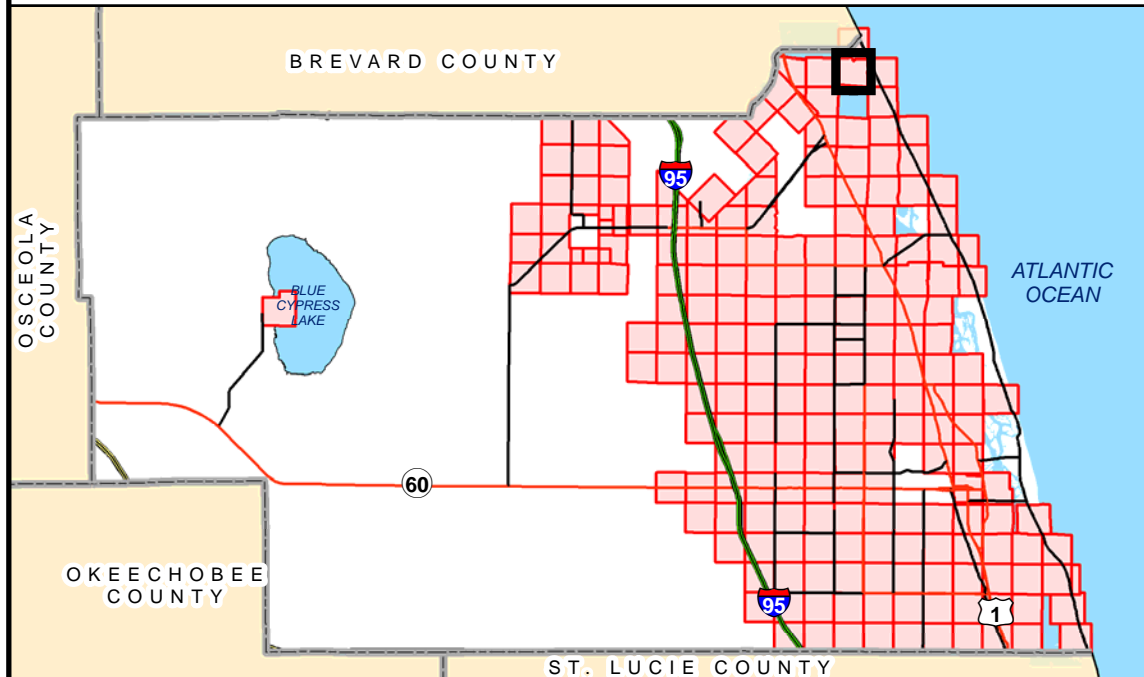
MAP LEGEND

- PLSS Section Corners
- City Limits
- TieBar Lines
- Special Corridors
- County Line
- Meander Lines
- Section Lines
- Tracts & Aliquot Parts
- Parcel Boundaries

ZONING

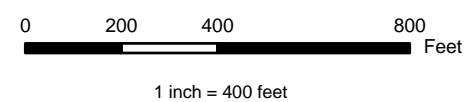
A-1	CRVP	RM-4
A-2	IG	RM-6
A-3	IL	RM-8
AIR-1	MED	RMH-6
CG	OCR	RMH-8
CH	PD	RS-1
CL	PDTND	RS-2
CN	PRO	RS-3
CON-1	R-BCID	RS-6
CON-2	RM-10	RT-6
CON-3	RM-3	Rose-4

LOCATOR MAP



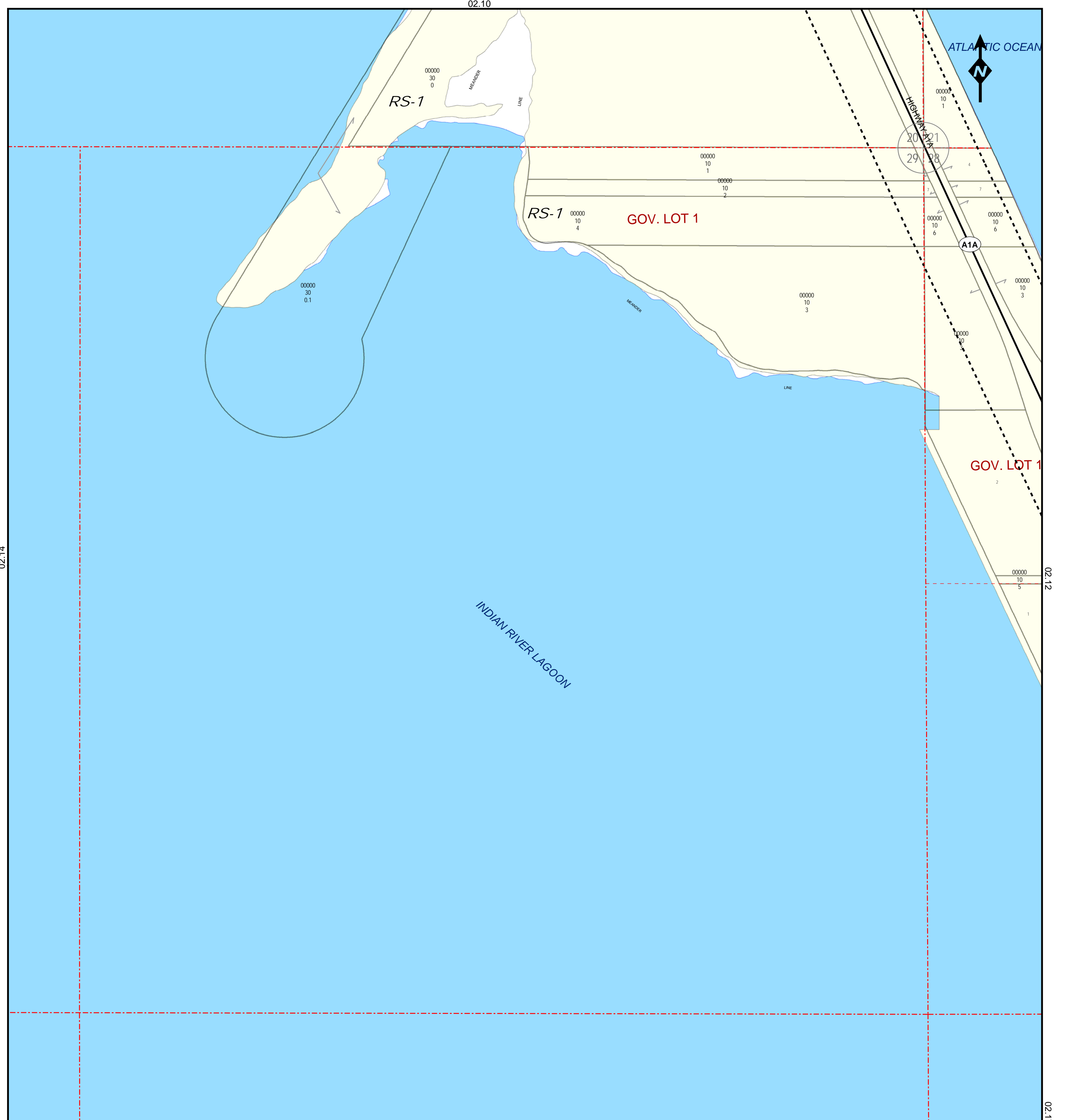
NOTE: Undeveloped riverfront wetlands are zoned Con-2, subject to survey verification. Contact county environmental planning staff for more information.

NOTE: Zoning designations adjacent to the St. Sebastian River may include Con-2 and Con-3, contingent upon site-specific environmental surveys. Such surveys require county staff approval and will set the precise boundary of Con-2 and Con-3.



INFORMATIONAL PLAT - NOT A SURVEY

THE INFORMATION CONTAINED HEREIN IS TAKEN FROM RELIABLE SOURCES HOWEVER, ITS ACCURACY IS NOT GUARANTEED
STATE PLANE COORDINATES, NAD83/90



02.14

02.12

02.17