

OFFICIAL ZONING ATLAS

INDIAN RIVER COUNTY, FLORIDA

Section 22 31S-38E

Map Number: 07.31

Map Date: Dec 11, 2009



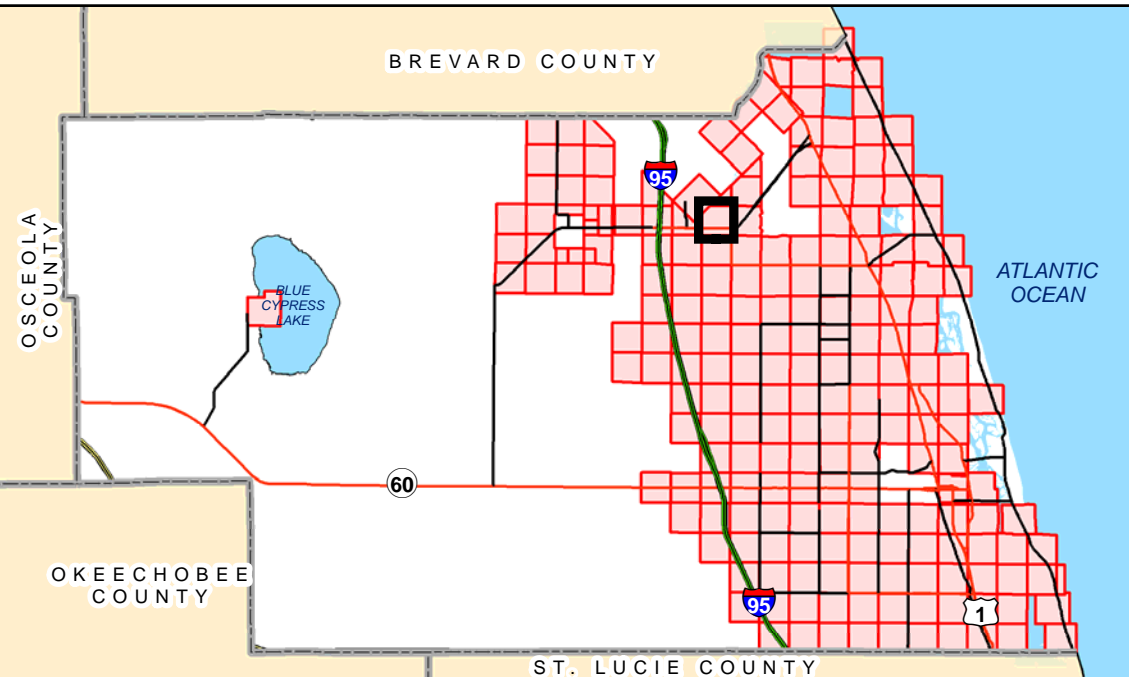
Community Development Department
1801 27th Street
Vero Beach, FL 32960
Phone: 772-226-1237

MAP LEGEND

- PLSS Section Corners
- City Limits
- TieBar Lines
- Special Corridors
- County Line
- Meander Lines
- Section Lines
- Tracts & Aliquot Parts
- Parcel Boundaries

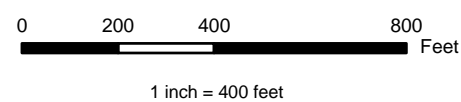
ZONING

LOCATOR MAP



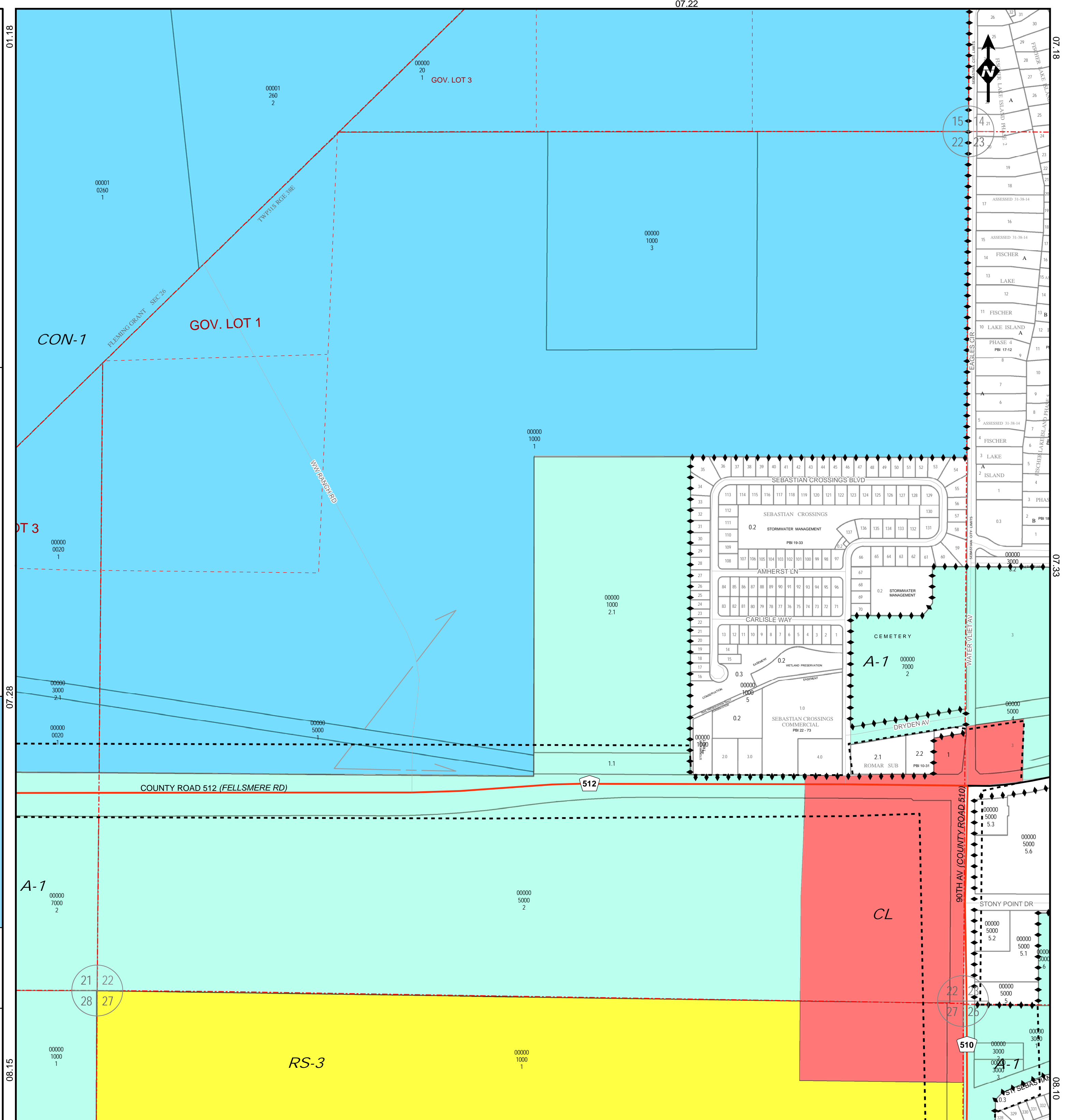
NOTE: Undeveloped riverfront wetlands are zoned Con-2, subject to survey verification. Contact county environmental planning staff for more information.

NOTE: Zoning designations adjacent to the St. Sebastian River may include Con-2 and Con-3, contingent upon site-specific environmental surveys. Such surveys require county staff approval and will set the precise boundary of Con-2 and Con-3.



INFORMATIONAL PLAT - NOT A SURVEY

THE INFORMATION CONTAINED HEREIN IS TAKEN FROM RELIABLE SOURCES HOWEVER, ITS ACCURACY IS NOT GUARANTEED STATE PLANE COORDINATES, NAD83/90



07.22

01.18

07.18

07.28

07.33

08.15

08.10

08.12