

OFFICIAL ZONING ATLAS

INDIAN RIVER COUNTY, FLORIDA

Section 26 31S-38E

Map Number: 08.10

Map Date: Dec 11, 2009



Community Development Department
1801 27th Street
Vero Beach, FL 32960
Phone: 772-226-1237

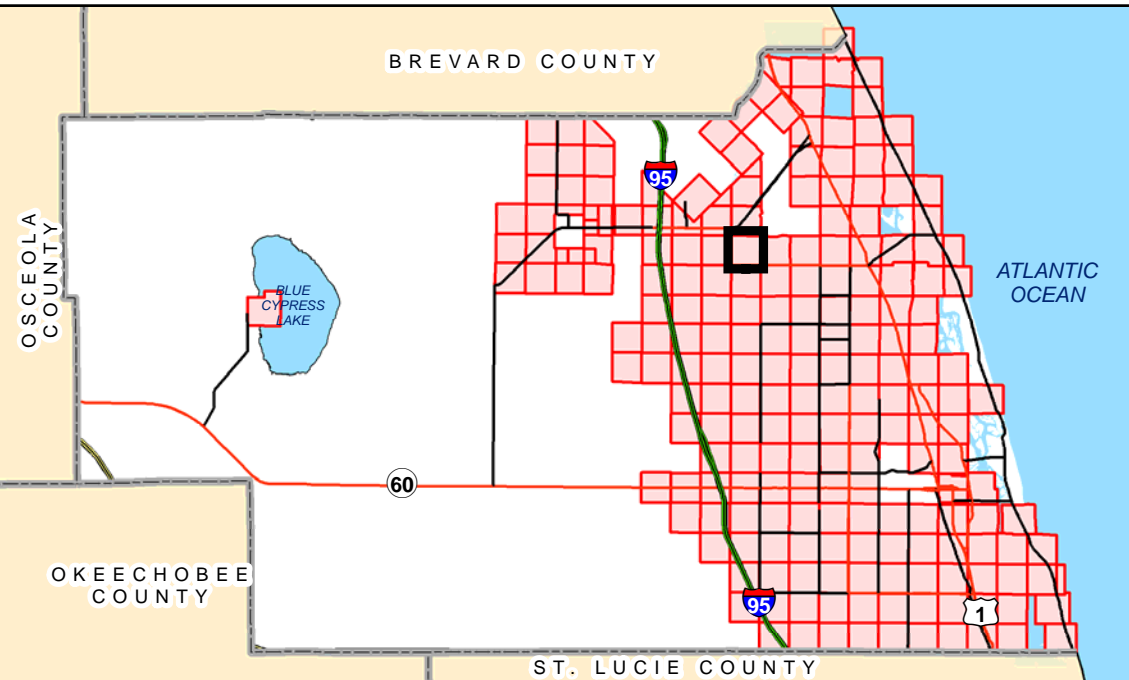
MAP LEGEND

- PLSS Section Corners
- City Limits
- TieBar Lines
- Special Corridors
- County Line
- Meander Lines
- Section Lines
- Tracts & Aliquot Parts
- Parcel Boundaries

ZONING

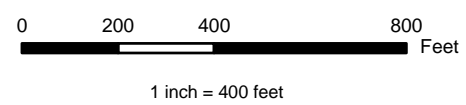
- | | | |
|-------|--------|--------|
| A-1 | CRVP | RM-4 |
| A-2 | IG | RM-6 |
| A-3 | IL | RM-8 |
| AIR-1 | MED | RMH-6 |
| CG | OCR | RMH-8 |
| CH | PD | RS-1 |
| CL | PDTND | RS-2 |
| CN | PRO | RS-3 |
| CON-1 | R-BCID | RS-6 |
| CON-2 | RM-10 | RT-6 |
| CON-3 | RM-3 | Rose-4 |

LOCATOR MAP



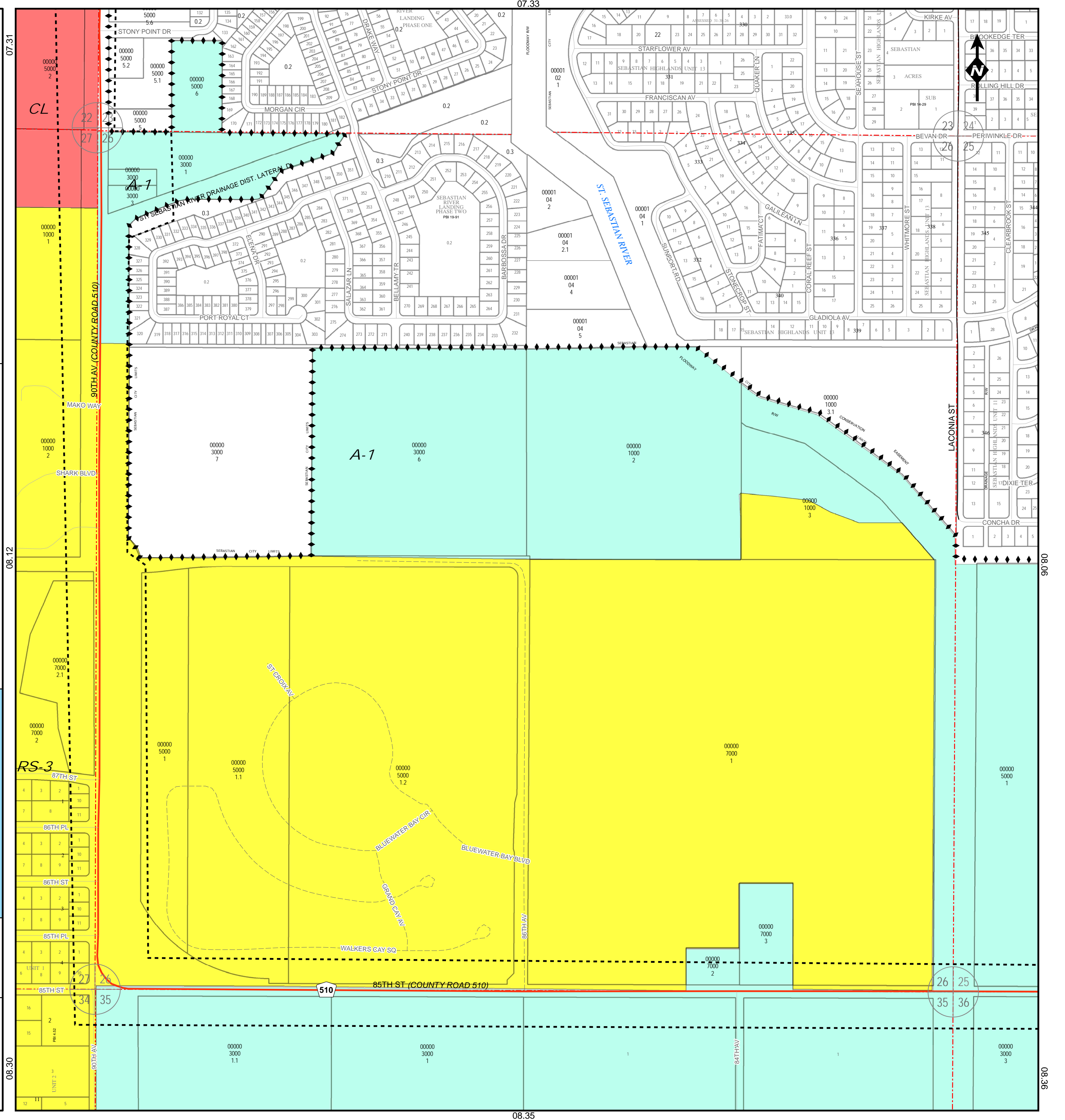
NOTE: Undeveloped riverfront wetlands are zoned Con-2, subject to survey verification. Contact county environmental planning staff for more information.

NOTE: Zoning designations adjacent to the St. Sebastian River may include Con-2 and Con-3, contingent upon site-specific environmental surveys. Such surveys require county staff approval and will set the precise boundary of Con-2 and Con-3.



INFORMATIONAL PLAT - NOT A SURVEY

THE INFORMATION CONTAINED HEREIN IS TAKEN FROM RELIABLE SOURCES HOWEVER, ITS ACCURACY IS NOT GUARANTEED STATE PLANE COORDINATES, NAD83/90



08.35

08.36