

# OFFICIAL ZONING ATLAS

## INDIAN RIVER COUNTY, FLORIDA

### Section 17 32S-39E

Map Number: 17.22

Map Date: Dec 11, 2009



Community Development Department  
1801 27th Street  
Vero Beach, FL 32960  
Phone: 772-226-1237

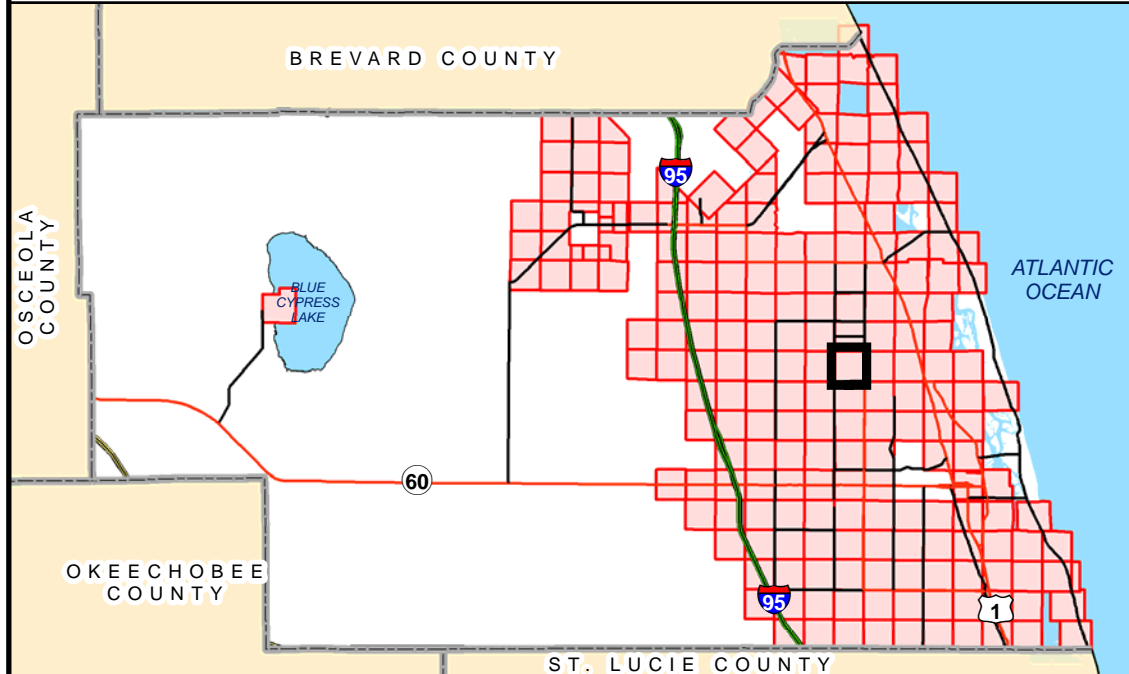
#### MAP LEGEND

- PLSS Section Corners
- County Line
- City Limits
- Meander Lines
- TieBar Lines
- Section Lines
- Tracts & Aliquot Parts
- Special Corridors
- Parcel Boundaries

#### ZONING

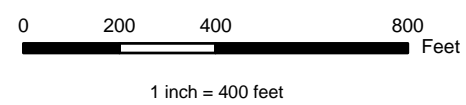
- |       |        |        |
|-------|--------|--------|
| A-1   | CRVP   | RM-4   |
| A-2   | IG     | RM-6   |
| A-3   | IL     | RM-8   |
| AIR-1 | MED    | RMH-6  |
| CG    | OCR    | RMH-8  |
| CH    | PD     | RS-1   |
| CL    | PDTND  | RS-2   |
| CN    | PRO    | RS-3   |
| CON-1 | R-BCID | RS-6   |
| CON-2 | RM-10  | RT-6   |
| CON-3 | RM-3   | Rose-4 |

#### LOCATOR MAP



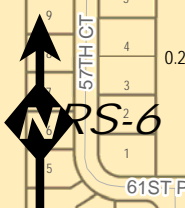
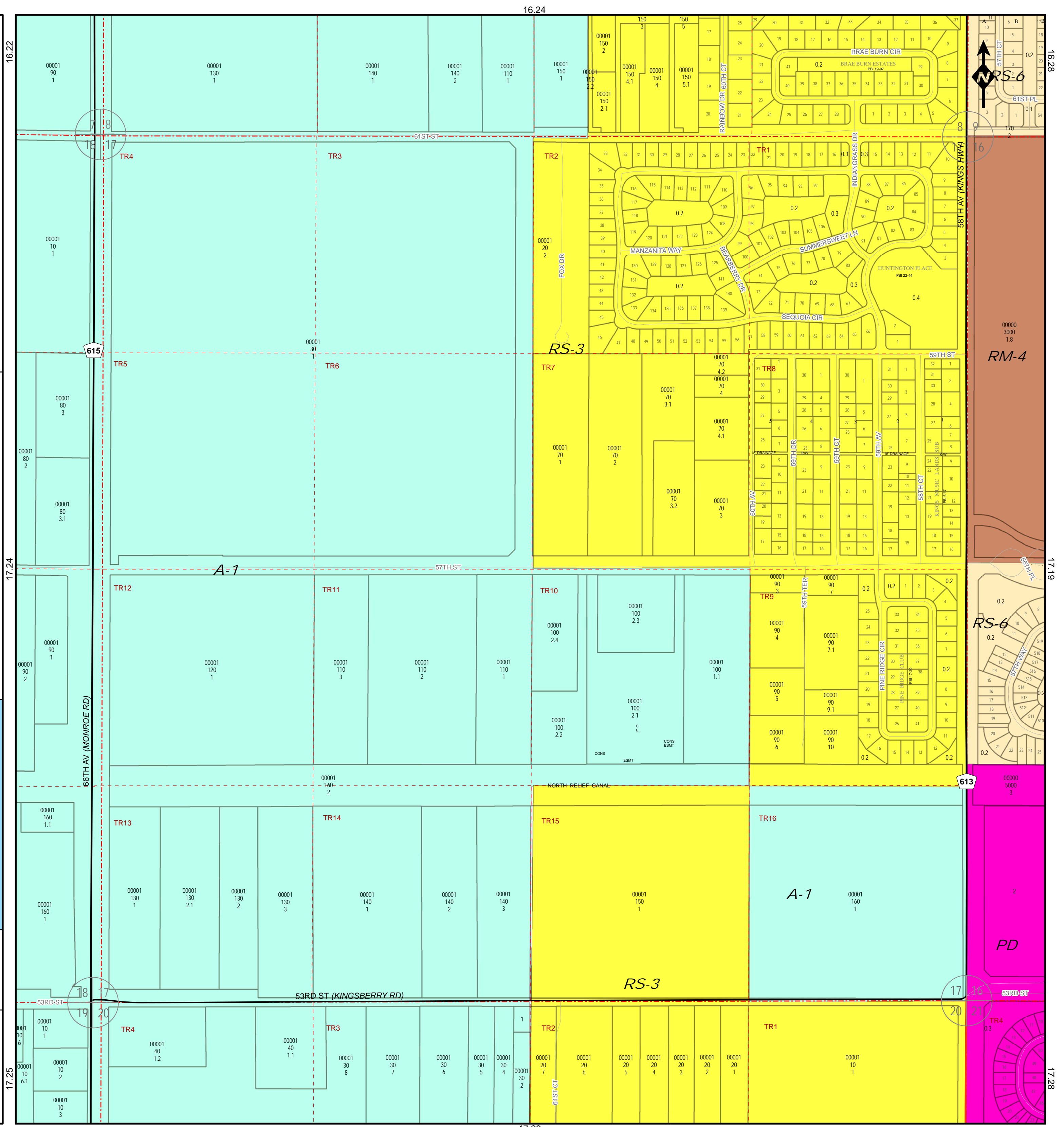
NOTE: Undeveloped riverfront wetlands are zoned Con-2, subject to survey verification. Contact county environmental planning staff for more information.

NOTE: Zoning designations adjacent to the St. Sebastian River may include Con-2 and Con-3, contingent upon site-specific environmental surveys. Such surveys require county staff approval and will set the precise boundary of Con-2 and Con-3.



#### INFORMATIONAL PLAT - NOT A SURVEY

THE INFORMATION CONTAINED HEREIN IS TAKEN FROM RELIABLE SOURCES HOWEVER, ITS ACCURACY IS NOT GUARANTEED STATE PLANE COORDINATES, NAD83/90



613

17

21

17.28

17.26

16.22

17

18

19

20

21

22

23

24

25

26

27

28

29

30

31

16.24

61ST ST

57TH ST

53RD ST

59TH ST

60TH ST

61ST ST

62ND ST

63RD ST

64TH ST

65TH ST

66TH ST

67TH ST

68TH ST

69TH ST

70TH ST

16.28

16

17

18

19

20

21

22

23

24

25

26

27

28

29

30