

# OFFICIAL ZONING ATLAS

## INDIAN RIVER COUNTY, FLORIDA

### Section 18 32S-39E

Map Number: 17.24

Map Date: Dec 11, 2009



Community Development Department  
1801 27th Street  
Vero Beach, FL 32960  
Phone: 772-226-1237

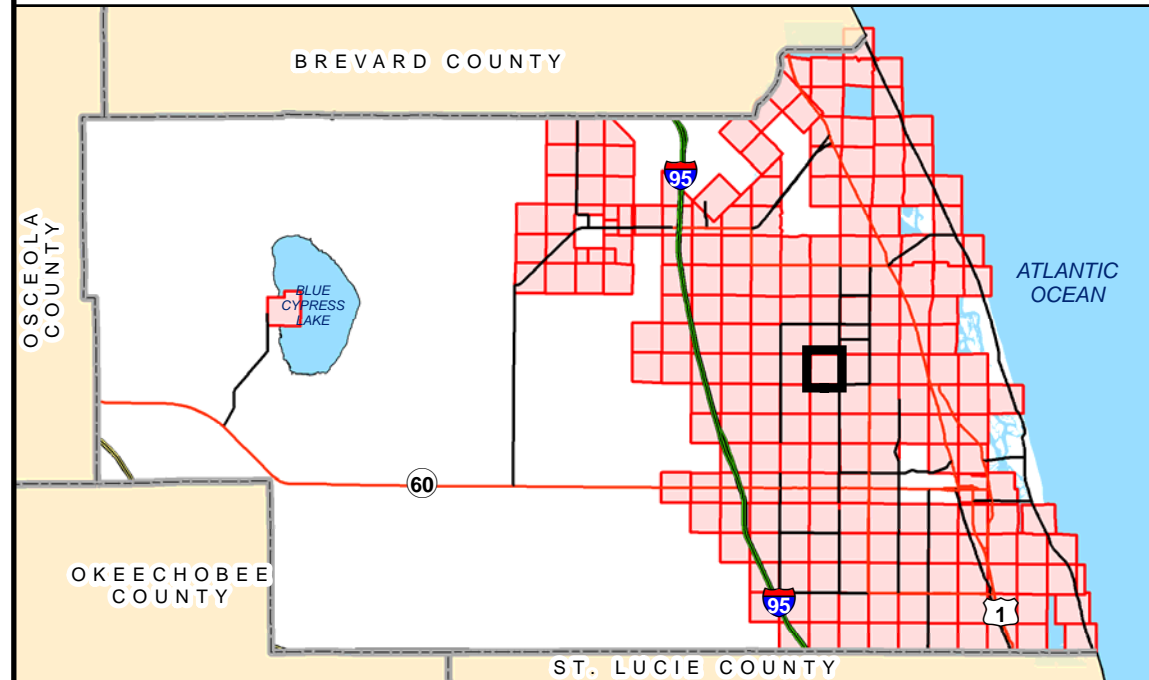
#### MAP LEGEND

- PLSS Section Corners
- City Limits
- TieBar Lines
- Special Corridors
- County Line
- Meander Lines
- Section Lines
- Tracts & Aliquot Parts
- Parcel Boundaries

#### ZONING

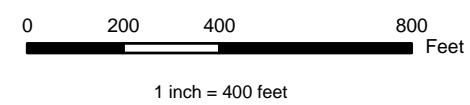
	A-1		CRVP		RM-4
	A-2		IG		RM-6
	A-3		IL		RM-8
	AIR-1		MED		RMH-6
	CG		OCR		RMH-8
	CH		PD		RS-1
	CL		PDTND		RS-2
	CN		PRO		RS-3
	CON-1		R-BCID		RS-6
	CON-2		RM-10		RT-6
	CON-3		RM-3		Rose-4

#### LOCATOR MAP



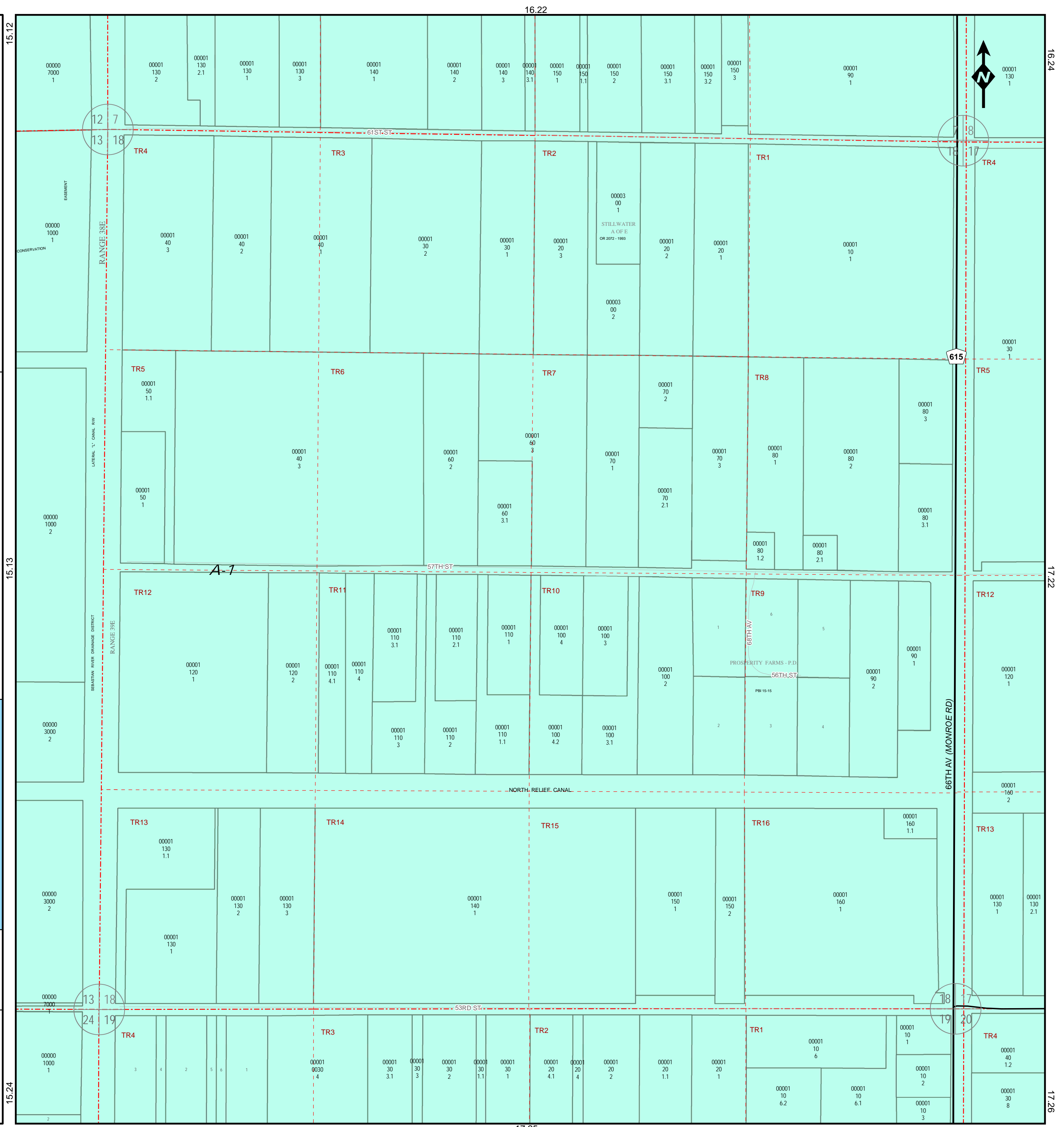
NOTE: Undeveloped riverfront wetlands are zoned Con-2, subject to survey verification. Contact county environmental planning staff for more information.

NOTE: Zoning designations adjacent to the St. Sebastian River may include Con-2 and Con-3, contingent upon site-specific environmental surveys. Such surveys require county staff approval and will set the precise boundary of Con-2 and Con-3.



#### INFORMATIONAL PLAT - NOT A SURVEY

THE INFORMATION CONTAINED HEREIN IS TAKEN FROM RELIABLE SOURCES HOWEVER, ITS ACCURACY IS NOT GUARANTEED  
STATE PLANE COORDINATES, NAD83/90



15.12

15.13

15.24

16.22

16.24

17.22

17.26

17.25